

ALASKA DIVISION OF HOMELAND SECURITY & EMERGENCY MANAGEMENT



SITUATION REPORT

25-063 March 4, 2025

Toll-Free 1.800.478.2337

Anchorage Area 907.428.7000

SEOC 907.428.7100

<p><u>SEOC Preparedness Level</u> Level 1-Routine Operations</p>	<p>http://ready.alaska.gov</p>	<p><u>National Terrorism Advisory System:</u> Read the NTAS Bulletin here</p>
<p><u>Maritime Security (MARSEC)</u> Level:1- Minimum Appropriate Security Measures</p>	<p>WHO Novel Coronavirus Pandemic (COVID-19): 2019 Novel Coronavirus</p>	<p><u>Alaska Military Installation Force Protection</u> <u>Level:</u> FPCON Bravo</p>

(Significant changes from previous situation reports are red.)

Significant Issues:

Department of Health (DOH):

For current information, see: <https://health.alaska.gov/dph/Pages/default.aspx>
<https://health.alaska.gov/dph/Emergency/Pages/prepared/default.aspx>

NTAS Bulletin:

The U.S. Department of Homeland Security issued an updated National Terrorism Advisory Bulletin on May 24, 2023. The current and expired bulletins can be viewed at the below link.

<https://www.dhs.gov/national-terrorism-advisory-system>

Travel Alerts and Conditions:

For current driving conditions, dial 511 or visit: <https://511.alaska.gov/>

Barry Arm Landslide / Tsunami Risk:

For the latest information on the Barry Arm Landslide and Tsunami risk, click here:

<https://dggs.alaska.gov/hazards/barry-arm-landslide.html>

Earthquakes:

United States Geological Service (USGS) Earthquake Information: <http://earthquake.usgs.gov/>

National Tsunami Warning Center: <http://tsunami.gov/>

Alaska Volcanoes:

Great Sitkin Alert Level: Watch and Aviation Color Code: **Orange**

Mt. Spurr Alert Level: Advisory and Aviation Color Code: **Yellow**

Atka Complex Alert Level: Advisory and Aviation Color Code: **Green**

For Alaska Volcano updates, go to: <https://www.avo.alaska.edu/>

±

Air Quality Index (AQI) Advisories:

For the most up-to-date Air Quality Index Advisories:

<http://dec.alaska.gov/Applications/Air/airtoolsweb/Home/Index>

Spills of Oil and Hazardous Substances:

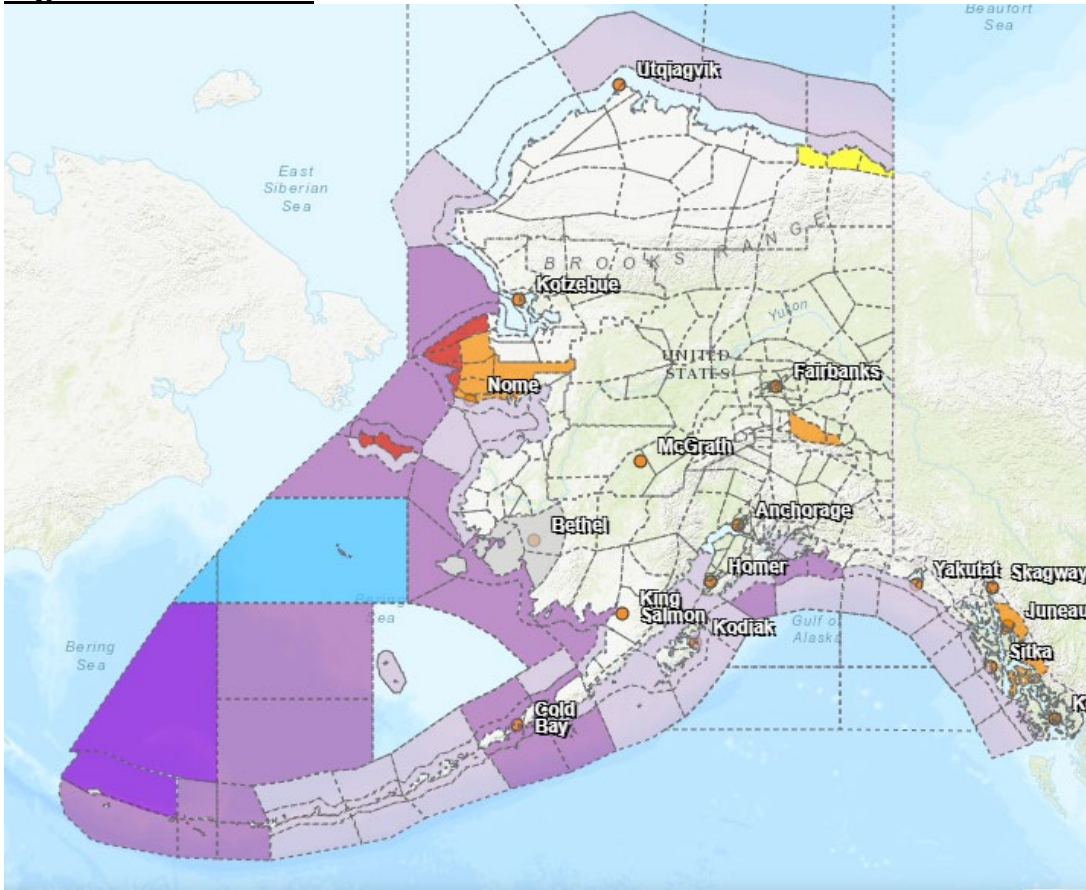
The Alaska Division of Environmental Conservation (ADEC) Spill Prevention and Response page is located at: <https://dec.alaska.gov/spar/>

Alaska Cyber Security Information:

State Employees may sign up for cybersecurity notifications and alerts at:

<https://oit.alaska.gov/security>

Significant Weather:



Winter Weather Advisory: in effect from 9am this morning till 6am Wednesday.

Pribilof Island

Dense Fog Advisory: in effect until 9am today

Eastern Chichagof Island; City and Borough of Juneau; Petersburg Borough; Prince of Wales Island

Winter Weather Advisory: in effect from 5pm today until 7am Wednesday

Southern Seward Peninsula Coast; Interior Seward Peninsula

Blizzard Warning: in effect from 5am Tuesday to noon Thursday

Shishmaref; Bering Strait Coast; St Lawrence Island

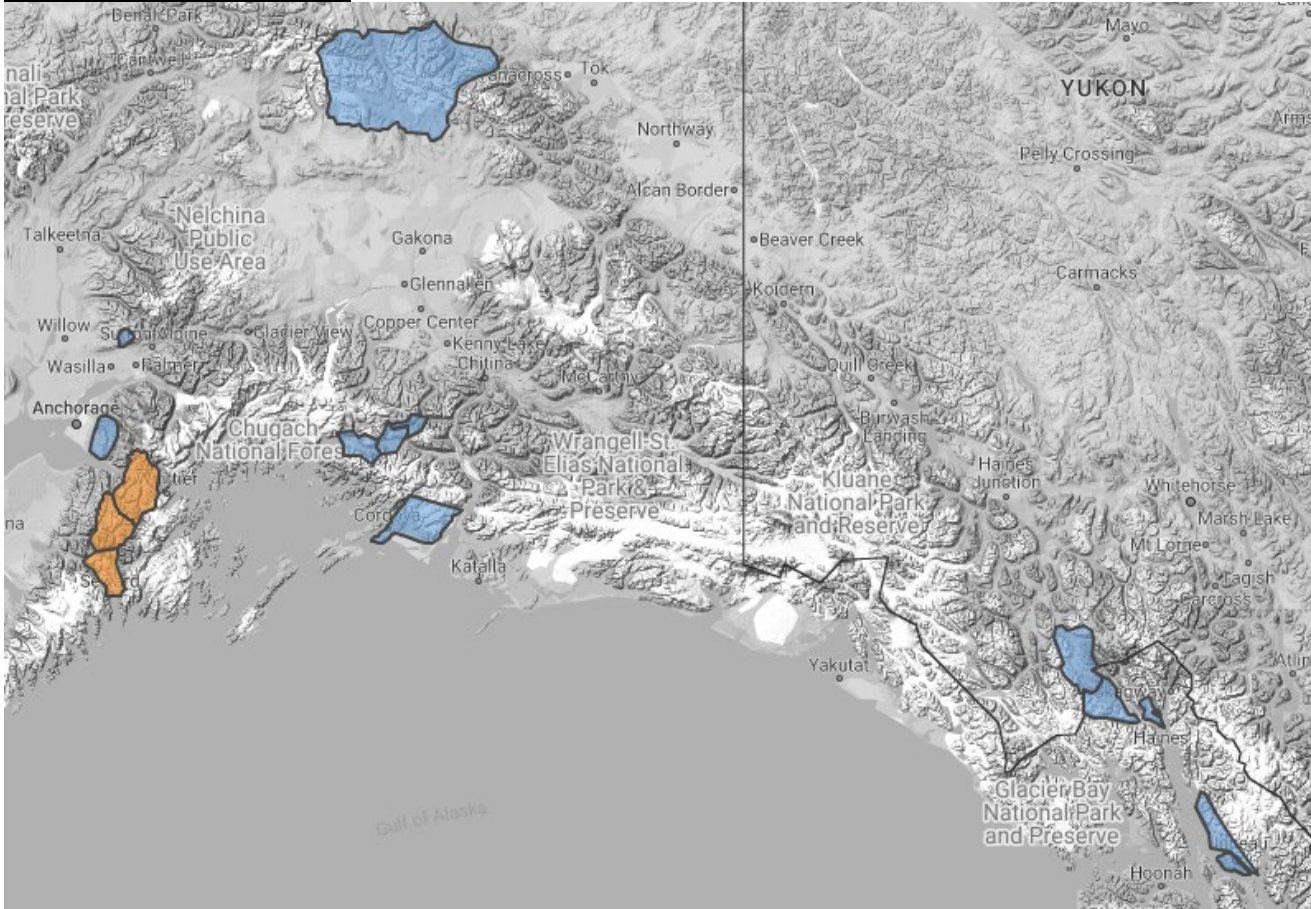
Wind Advisory: 6am Wednesday till 3pm Thursday

Eastern Alaska Range North of Trims Camp

For more information and the most current weather, Watches / Warnings / Advisories go to:

<https://weather.gov/arh/>

Avalanche Conditions:



Turnagain Pass – Considerable 1,000' to 2,500, Considerable above 2,500'

Summit Lake – Moderate 1,000' to 2,500, Considerable above 2,500'

Seward and Lost Lake – Considerable 1,000 to 2,500', Considerable above 2,500'

Valdez Maritime, Intermountain, and Continental – Moderate at all levels

Hatcher Pass –Low at all levels.

For more information and the most current avalanche conditions, go to: <https://alaskasnow.org/>

The Next Situation Report will be on **March 5, 2025**. An interim report will be prompted by a significant change in the situation or the threat level. This report is posted on the internet at <https://ready.alaska.gov/sitrep>.

To register for email distribution, PLEASE go to:

<http://list.state.ak.us/mailman/listinfo/dhsem.situation.report>.

Direct questions regarding this report to the SEOC at 907-428-7100 or seoc@alaska.gov.